

SPUDS Tune Swap #32

Beverages - July 22, 2021

1. Cup of Tea [D] John Bunch
2. Parting Glass [D] John Bunch
3. Juice of Barley [D] John Bunch
4. O'Carolan's Draught [G] Craig N
5. Tilting Summer In [C] Sarah and Bill
6. Coffee [Am]/ Black Coffee [F] Adlai
7. Watkin's Ale [G] Sandy
8. Temperance Reel [aka The Teetotaler][G] Craig N
9. Fly in the Porter [D] Enid
10. Give the Fiddler a Dram [G] Enid
11. Mug of Brown Ale [Am] Enid
12. The Hop Ground [D] Steve
13. Mr Beveridge's Maggot [Gm] Steve
14. Off to California [G] Bob Pollack
15. Bottom of the Punchbowl [D] Bob Pollack
16. Yellow Tinker [Drunken Tinker][Am]/ Ale is Dear [Bdor]/ The Glass of Beer [Bm] Kirsten
17. Moinette [Em] Bill and Sarah

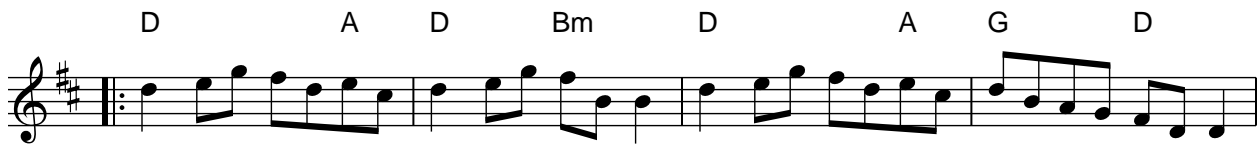
Extras:

18. Juice of Barley ECD
19. Whiskey Before Breakfast
20. Farewell to Whiskey
21. Pernod
22. Maid Behind the Bar

Cup Of Tea

traditional

♩ = 120
Em



The Cup of Tea

Ireland

Em D

Em D

D A D Bm D G A D

D G D A D G A D

D D A D G A D

D D A G A D

The Parting Glass

Traditional

♩ = 80

Bm D A Bm A

Bm D A Bm A Bm

D D Bm A

Bm D A Bm A Bm

Of all the money e'er I had, I spent it in good company; And
all the harm I've ever done, alas was done to none but me;
And all I've done for want of wit, to memory now I can't recall, So
fill to me the parting glass, goodnight and joy be with you all.

Of all the comrades e'er I had, they're sorry for my going away,
And all the sweethearts e'er I had, they wish me one more day to stay,
But since it falls unto my lot that I should go and you should not,
I'll gently rise and softly call, goodnight and joy be with you all.

If I had money enough to spend and leisure time to sit awhile,
There is a fair maid in this town who sorely has my heart beguiled.
Her rosy cheeks and ruby lips, I own she has my heart in thrall,
So fill me to the parting glass, goodnight and joy be with you all.

The Juice of the Barley

Irish

♩ = 100

Musical score for 'The Juice of the Barley' in 6/8 time, key of D major. The score consists of three staves of music. The first staff has a tempo marking of ♩ = 100. The notes are: D4, E4, F#4, G4, A4, B4, C5, B4, A4, G4, F#4, E4, D4. The second staff has notes: D4, E4, F#4, G4, A4, B4, C5, B4, A4, G4, F#4, E4, D4. The third staff has notes: D4, E4, F#4, G4, A4, B4, C5, B4, A4, G4, F#4, E4, D4. Chords are indicated above the notes: D, D, G, D, D, D, G, Em, D, D, G, D, D, Bm, G, Em, D, D, D, D, D, Em.

O'Carolan's Draught

Musical score for 'O'Carolan's Draught' in 4/4 time, key of D major. The score consists of seven staves of music. The first staff has notes: D4, E4, F#4, G4, A4, B4, C5, B4, A4, G4, F#4, E4, D4. The second staff has notes: D4, E4, F#4, G4, A4, B4, C5, B4, A4, G4, F#4, E4, D4. The third staff has notes: D4, E4, F#4, G4, A4, B4, C5, B4, A4, G4, F#4, E4, D4. The fourth staff has notes: D4, E4, F#4, G4, A4, B4, C5, B4, A4, G4, F#4, E4, D4. The fifth staff has notes: D4, E4, F#4, G4, A4, B4, C5, B4, A4, G4, F#4, E4, D4. The sixth staff has notes: D4, E4, F#4, G4, A4, B4, C5, B4, A4, G4, F#4, E4, D4. The seventh staff has notes: D4, E4, F#4, G4, A4, B4, C5, B4, A4, G4, F#4, E4, D4. Chords are indicated above the notes: G, D, G, C, D, Am, D, G, D, Em, A, D, A, 1 D, 2, D, G, C, G, C, Em, G, D, Em, Bm, C, C (Em), C, C, G, Am, G, F#, Em, D, C, D, D, Em, F#dim, G, G.

Tilting Summer In

© 2015 Sarah Gowan

Chords for 'Tilting Summer In':

Staff 1: C, Dm7, Em7, G, F, G, Am, G7

Staff 2: C, Dm, Em, G, Dm7, F, G, C

Staff 3: G, Em, Dm7, C, Am, Dm7, G

Staff 4: G, Em, Dm7, C, Dm7, F, G, C

www.boxandstringmusic.com

Coffee

Gary Haggerty

Chords for 'Coffee':

Staff 1: Am, Em, Am, F, Em, Am

Staff 2: Am, (F), Am (D), (F), Am, G, Am, G, Am, Em, Am

Higher notes in double-stops are alternates for instruments without the low A.

Alt chords for B part: Am | | F | | D | | F | (E(m)7) |

Black Coffee

Jonathan Jensen

Dm Gm Dm /c Gm/B^A Dm Gm(G7) F C7 F
 F /e /d /c B^b /a /g C7
 F /e /d /c | 1 Gm/B^b C F | 2 Gm A7 Dm

Watkin's Ale

G Em Am C D G
 G Am C D
 G D Em Bm C G D G

Temperance Reel

The Teetotaler

Traditional

♩ = 200

3

G G Em Em D

G G Em | 1 D G | 2 D G

Em Em D D

Em Em Em | 1 D G | 2 D G

The Fly in the Porter

Paddy O'Brien

Musical score for "The Fly in the Porter" in D major, 6/8 time. The score consists of six staves of music. The first staff begins with a treble clef, a key signature of two sharps (D major), and a 6/8 time signature. The melody is written on a single staff with a D chord above the first measure and a C chord above the eighth measure. The second staff continues the melody with D, A, and D chords. The third staff features a repeat sign with a tilde (~) over the first measure and a C chord above the fifth measure. The fourth staff has a D chord with a tilde over the first measure, an A chord above the fifth measure, and a first ending bracket over the last two measures. The fifth staff has D, G, D, D, G, and D chords above the measures. The sixth staff has G, D, and A chords above the first three measures, followed by a first ending bracket over the last two measures.

Give The Fiddler A Dram

Musical score for "Give The Fiddler A Dram" in D major, 4/4 time. The score consists of three staves of music. The first staff begins with a treble clef, a key signature of two sharps (D major), and a 4/4 time signature. The melody is written on a single staff with G, F, and D chords above the first three measures, followed by a first ending bracket over the last two measures. The second staff has G, C, A, and D chords above the measures. The third staff has G, C, and D chords above the first three measures, followed by a first ending bracket over the last two measures.

Mug of Brown Ale

Musical score for "Mug of Brown Ale" in 6/8 time, key of D major. The score consists of four staves of music with guitar chords indicated above the notes.

Staff 1: Am G

Staff 2: Am G | 1 G | 2 G Am

Staff 3: Am G

Staff 4: Am G Am

The Hop Ground

Preston, 1794

Musical score for "The Hop Ground" in 6/8 time, key of D major. The score consists of three staves of music with guitar chords indicated above the notes. A tempo marking of quarter note = 112 is present.

Staff 1: D G D D Bm

Staff 2: Em A7 D G D D Em Bm A7

Staff 3: D G D G D Bm Em A7 D G D G D Em Bm A7

Mr Beveridge's Maggot

Henry Playford, 1701

♩ = 100

A

Gm D7 Gm Cm D7 Gm Eb F7 Bb /F F7 Bb



B

Bb F/A Gm Cm A7/C# D



D7 Gm D7 Gm Bb Gm Cm Gm/D D7 Gm

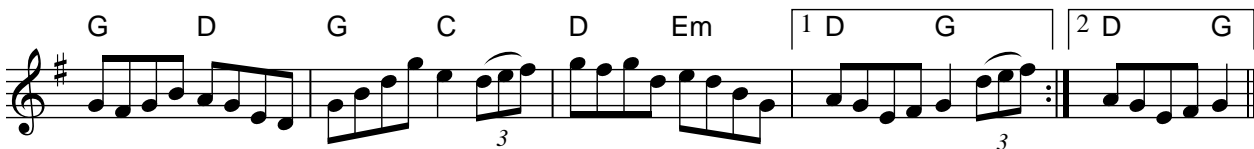
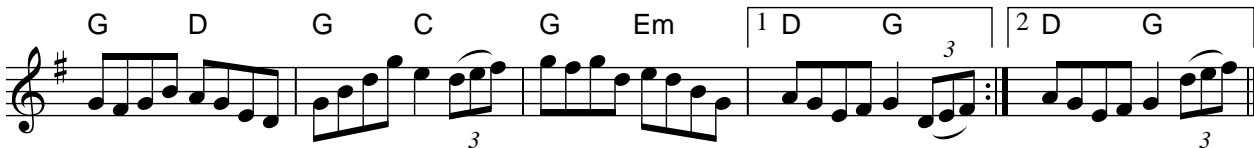


Off to California

Whiskey in the jar
Whiskey you're the devil

Ireland

Hornpipe



Bottom of the Punchbowl

Musical score for 'Bottom of the Punchbowl' in D major, 4/4 time. The score consists of four staves of music. The first staff has a D chord above the first measure and Em and A chords above the last two measures. The second staff has D, G, A, and D chords above its measures. The third staff has D, Em, and A chords above its measures. The fourth staff has D, G, A, and D chords above its measures. The piece ends with a double bar line and repeat dots.

Yellow Tinker Drunken Tinker

Musical score for 'Yellow Tinker' and 'Drunken Tinker' in D major, 4/4 time. The score consists of three staves of music. The first staff has an A chord above the first measure and a first ending bracket labeled '1 G' above the last two measures. The second staff has a second ending bracket labeled '2 G' above the first two measures, followed by A, G, and A chords above the remaining measures. The third staff has G, A, Em, and G chords above its measures. The piece ends with a double bar line and repeat dots.

Ale is Dear Maighstir Ord

Musical score for 'Ale is Dear' in D major, 4/4 time. The score consists of two staves of music. The first staff has Bm, A, Bm, A, and Bm chords above its measures. The second staff has Bm, A, and a first ending bracket labeled '1 G F# Bm' above the first three measures, followed by a second ending bracket labeled '2 D A F# Bm' above the last three measures. The piece ends with a double bar line and repeat dots.

The Glass of Beer

Musical notation for "The Glass of Beer" in G major, 2/4 time. The piece consists of two staves. The first staff has a key signature of one sharp (F#) and a common time signature. The second staff has a key signature of two sharps (F# and C#) and a common time signature. The melody is written in treble clef. Chords are indicated above the notes. The piece features a first ending and a second ending.

Chords: Bm, A, Bm, 1 D, A, 2 D, A7

Mominette (Nobel Franz)

Jean-Francois Maxou Heintzen

Musical notation for "Mominette (Nobel Franz)" in G major, 4/4 time. The piece consists of four staves. The melody is written in treble clef. Chords are indicated above the notes. The piece features a first ending and a second ending. There are triplets in the third and fourth staves.

Chords: Em, Am, Em, Am, Em, B7, Em, Am, Em, Am, B7, Em, Em, Am, D7, G, C, G, B7, Em, Am, D, G, Am, B7, Em

We know this tune as Nobel Franz, but it was originally called "Mominette", by the composer. To make matters even more confusing it has also been passed around as The New French Schottische, Schottische a Bethanie, Ca Ira Scottisch and, when played as a jig, The Plane Tree

Juice of Barley ECD

Henry Purcell (1690)

Am C F(Dm) Am

F C Dm Am

C G C F C

Am G Am Em Am

Whiskey Before Breakfast

D G D A

D G D A D

D Em A

D A G D G D A D

Farewell to Whiskey

Neil Gow

Chords: G, C, G, Bm, C, G, Am, D7, G, D7, G, G, Am, D7, G, C, G, C, G, Am, D7, G, D7, G

Pernod

Johnny Cunningham 1984

Chords: Bm, Bbdim, Adim(B7), Em/G, A, F#, G, Bm, Bbdim, Adim(B7), Em/G, A, F#, G, Em, Em, A, Bm, Em, Bm, A, G, Em, Em, A, Bm, Em, Bm, A, G, Bm

Last Time

Maid Behind the Bar
Little Judy's Reel

The image displays a musical score for two tunes, 'Maid Behind the Bar' and 'Little Judy's Reel', arranged in four staves. The key signature is D major (two sharps) and the time signature is common time (C). The first two staves represent the first tune, and the last two staves represent the second tune. Chord symbols are placed above the notes to indicate the harmonic structure.

Staff 1 (Maid Behind the Bar): Chords: D, Bm, G, A7.

Staff 2 (Maid Behind the Bar): Chords: D, G, A7, D.

Staff 3 (Little Judy's Reel): Chords: D, Em, A7.

Staff 4 (Little Judy's Reel): Chords: D, G, A, D.